

# Tote Bag Instructions



**Step 1:** After you have cut out your pattern, lay it on your fabric, taking care to make sure you have lined up the pattern on the fold as shown. **Cut two each** of the outside fabric and lining.



**Step 2:** Sew together the handle tops of the outside, and repeat with the lining.



**Step 3:** Match the lining with the outside and sew together the sides of the handle.

**Step 4:** Clip the edges of the curves along all sides of the handle, taking care not to cut through your seams.





**Step 5:** Turn bag inside out as shown. Then bring the bottom parts together, lining with lining and outside with outside.



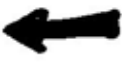
**Step 6:** Pin all the way around the edges and sew, leaving an opening of about 3-4" at the bottom of the lining as shown.



**Step 7:** Using the hole at the bottom of the lining, turn the bag completely inside out.



**Step 8:** To finish it off, stitch the hole at the bottom of the lining closed, either by hand or with your machine.



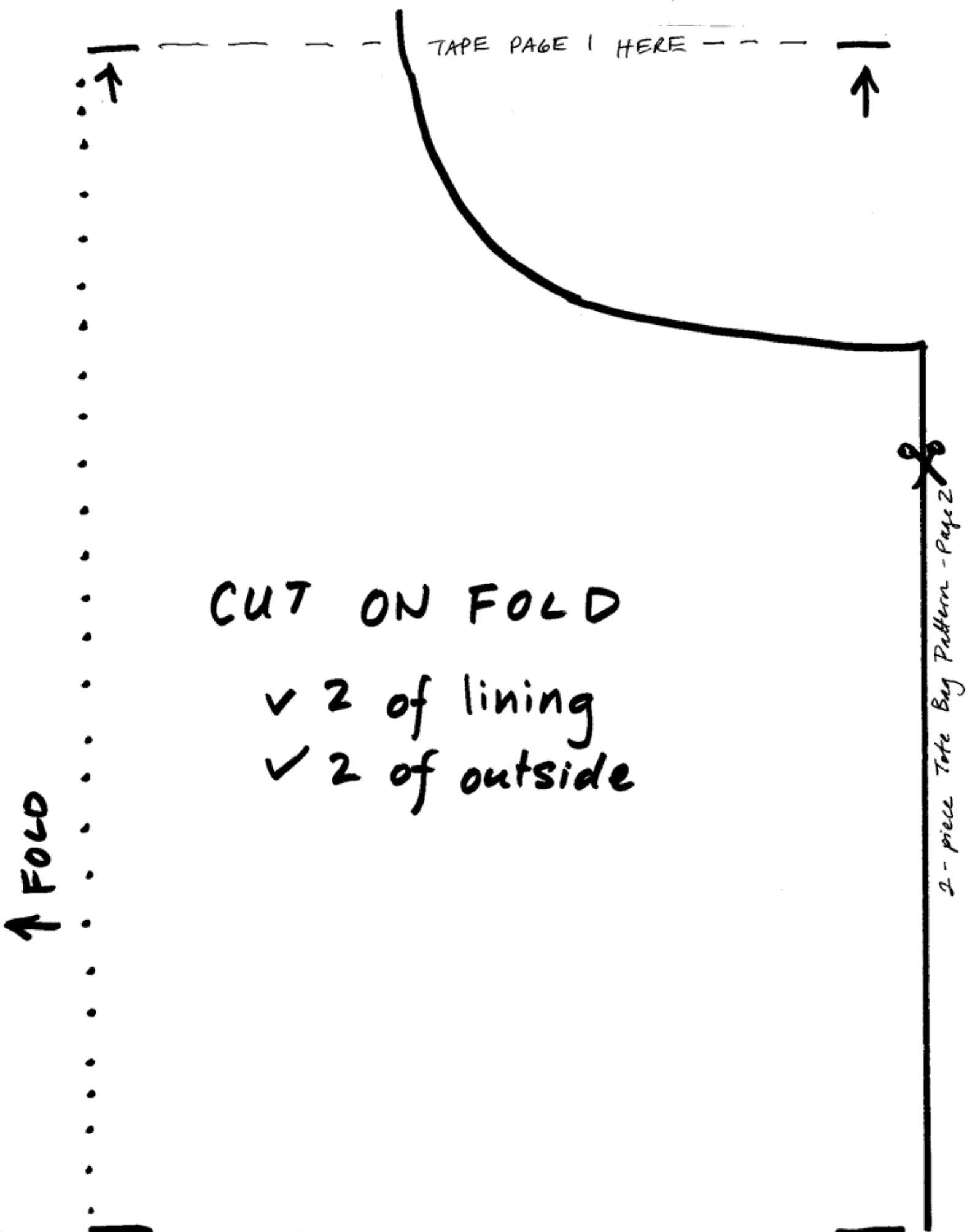
FOLD



TAPE TO PAGE 2



2-piece tote bag pattern - page 1



TAPE PAGE 1 HERE

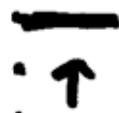
↑ FOLD

CUT ON FOLD

- ✓ 2 of lining
- ✓ 2 of outside

2-piece Tote Bag Pattern - Page 2

FOLD



TAPE PAGE 2 HERE



2-piece Tote Bag Pattern - Page 3