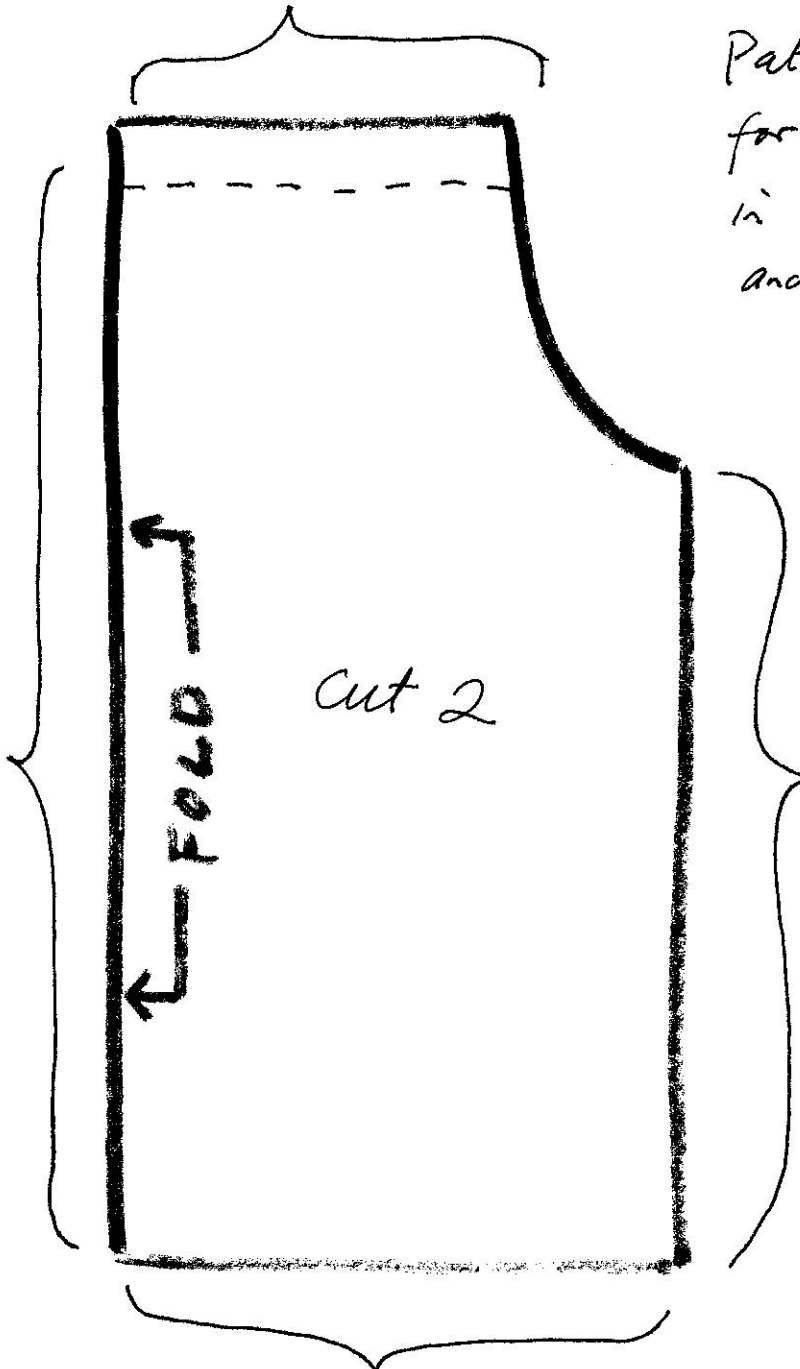


S = 7 1/2"  
M = 8"  
L = 9"

Pattern diagram  
for summer blouse  
in small, medium,  
and large sizes.

S = 24"  
M = 25"  
L = 26"



S = 16 1/2"  
M = 17"  
L = 19 1/2"

S = 11 1/2"  
M = 12"  
L = 13 1/2"